



Precision Performance  
Hot Air Tools for Electronic Applications

# Electronics Industry Kits & Accessories

STEINEL has precision performance hot air tools for electronic applications and industries such as:

soldering & desoldering

printed circuit boards

medical devices

electronics

automotive

wire harnessing

composite layup

aerospace & defense

telecommunications

heavy equipment



Spreader Nozzle  
50 mm  
PN: 110048643



Pinpoint Reducer Nozzle  
4 mm  
PN: 110049668



Reflector Nozzle  
14 mm  
PN: 110048752



Reflector Nozzle  
9 mm  
PN: 110048646



Solder Sleeve Nozzle  
35 x 20 mm  
PN: 110039169



Reflector Nozzle  
39mm  
PN: 110048645



Protection Guard  
Fits 2320 - 1820  
PN: 110094472



HL Guard Cage  
Fits 2320 - 1820  
PN: 110057833



Heat Gun Stand  
Magnetic  
PN: 110049589



Heat Gun Stand  
Vacuum Cup  
PN: 110049586



Adapter Nozzle  
Fits 2320 - 1920  
PN: 110075799



Electronics Kit  
HL 2020 E  
PN: 110051533



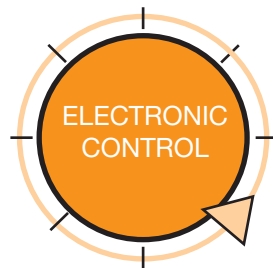
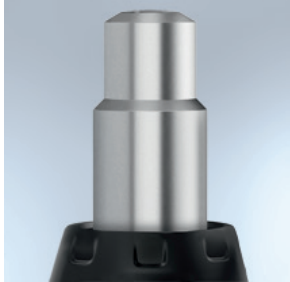
Silver Kit  
HL 2020 E  
PN: 110051541



Heat Shrink Kit  
HL 2020 E  
PN: 110093896

# Nothing but the BEST

## HG 2520 E



### KEY FEATURES

- LCD display with loc function
- 10,000 hour powerful brushless motor
- Safety heat indicator
- Hanger
- Plug-in heating element
- Ergonomic handle
- Power interrupt feature
- Changeable power cord
- On / Off switch
- Joystick programmable functions
- Non-slip standing surface
- Variable airflow

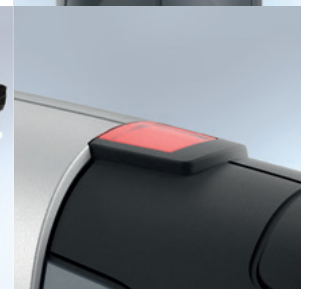
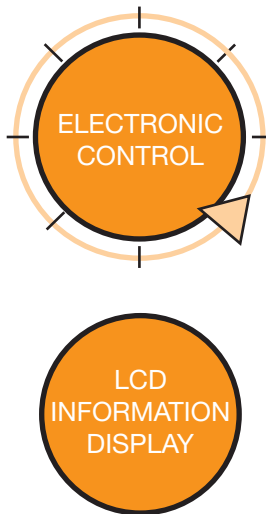
### TECH SPECS

- 120 VAC, 60 Hz power supply
- 1750 W output
- 120 - 1300° F temperature range



# BETTER than the rest

## HG 2320 E



### KEY FEATURES

- LCD display with loc function
- Brush motor
- Safety heat indicator
- Hanger
- Ergonomic handle with soft inlay
- Changeable power cord
- Variable airflow
- Joystick programmable functions
- Non-slip standing surface

### TECH SPECS

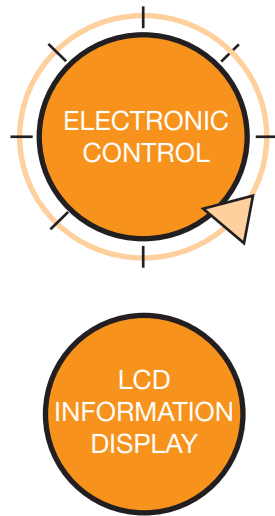
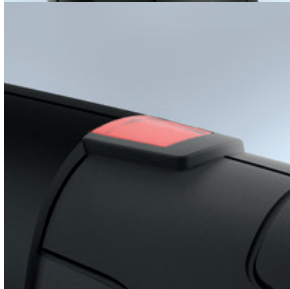
- 120 VAC, 60 Hz power supply
- 1600 W output
- 120 - 1200° F temperature range



PN: 110025598

# BETTER than the rest

## HG 2320 ESD



### KEY FEATURES

- 3 prong grounded plug
- LCD display with loc function
- Brush motor
- Safety heat indicator
- Hanger
- Ergonomic handle with soft inlay
- Changeable power cord
- Variable airflow
- Joystick programmable functions
- Non-slip standing surface

### TECH SPECS

- 120 VAC, 60 Hz power supply
- 1600 W output
- 120 - 1200° F temperature range

PN: 110073503

# BETTER than the rest

## HL 2020 E



### KEY FEATURES

- LCD display with new functions
- Brush motor
- Safety heat indicator
- Hanger
- Ergonomic handle with soft inlay
- Changeable power cord
- 3-stage airflow
- Ceramic encapsulated heating element
- Non-slip standing surface
- Heat accumulation warning
- Thermal cut-out, overheat control

### TECH SPECS

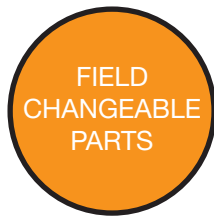
- 120 VAC, 60 Hz power supply
- 1600 W output
- 120 - 1150° F temperature range

PN: 110025597



# BETTER than the rest

## HL 1920 E



### KEY FEATURES

- Thumbwheel temperature setting
- Brush motor
- Hanger
- Ergonomic handle with soft inlay
- Changeable power cord
- 3-stage airflow
- Ceramic encapsulated heating element
- Non-slip standing surface
- Optimized center of gravity
- Thermal cut-out

### TECH SPECS

- 120 VAC, 60 Hz power supply
- 1500 W output
- 120 - 1100° F temperature range

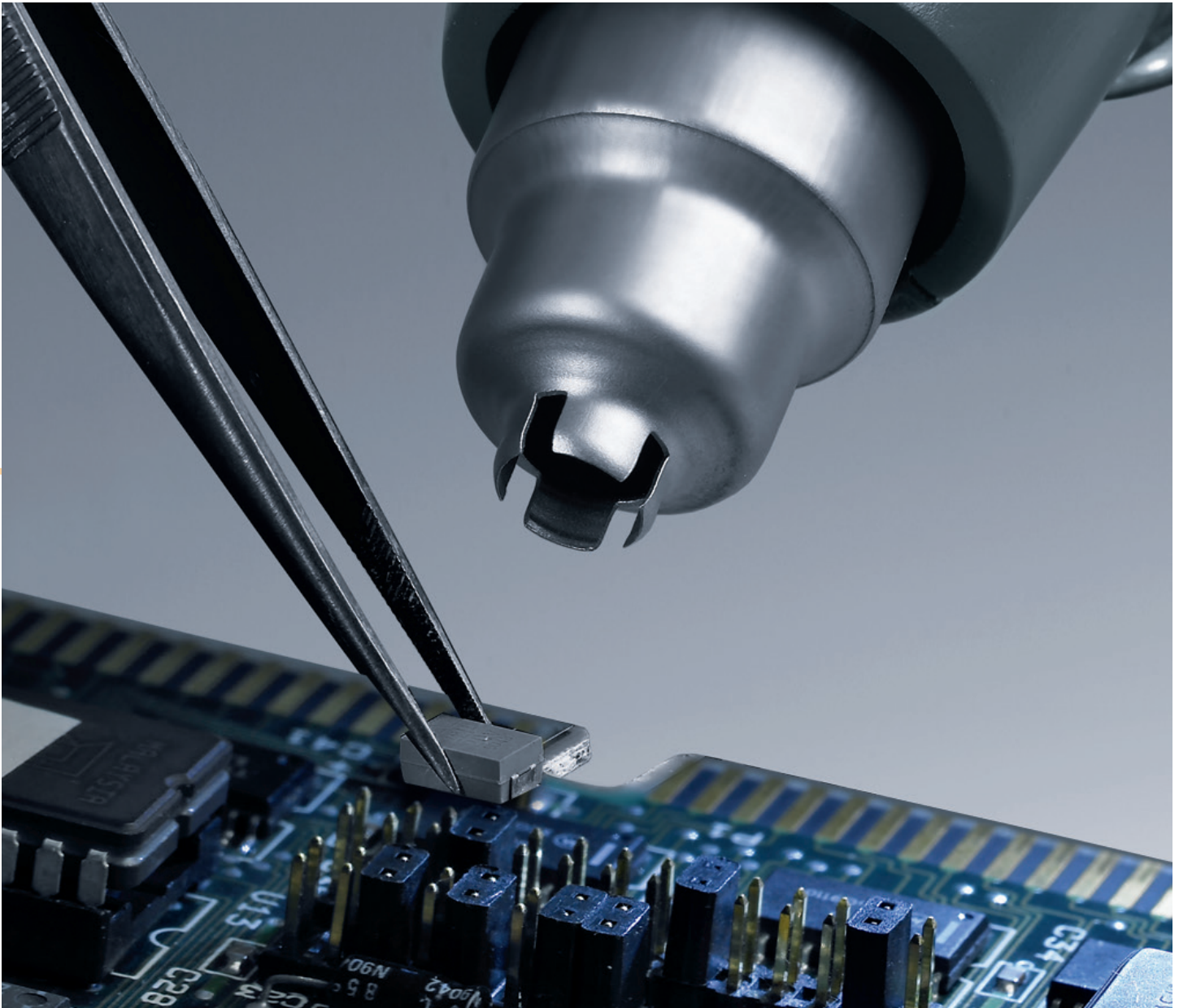
PN: 110025596





# GOOD Quality

## HL 1820 S



### KEY FEATURES

- Brush motor
- Hanger
- Ergonomic handle with soft inlay
- Changeable power cord
- 3-stage airflow
- Ceramic encapsulated heating element
- Non-slip standing surface
- Optimized center of gravity
- Thermal cut-out

### TECH SPECS

- 120 VAC, 60 Hz power supply
- 1400 W output
- 120 / 750 / 1100° F, 3 temperature options



PN: 110025541



# GOOD Quality

## HL 1620 S



### KEY FEATURES

- Dual temperature options
- Brush motor
- Changeable power cord
- 2-stage airflow
- Ceramic encapsulated heating element

### TECH SPECS

- 120 VAC, 60 Hz power supply
- 1300 W output
- 575 / 950° F, 2 temperature options



PN: 110023455

# NEW Possibilities

## Mobile Heat 5



IDEAL  
FOR  
FIELD  
REPAIRS

### KEY FEATURES

- Flexible setting options
- LCD display
- 4 preset application specific applications
- Safety start button
- LED illumination on base of tool
- Compatible with all push-on nozzles
- Rechargeable

### TECH SPECS

- 18 volts power supply
- 900 - 1000 W output
- 120 - 930° F temperature range

ADDITIONAL  
BATTERIES  
AVAILABLE

ASK ABOUT  
MOBILE HEAT  
KITS

# NEW Possibilities

## Mobile Heat 3



### KEY FEATURES

- Dual temperature options
- Safety start button
- LED illumination on base of tool
- Compatible with all push-on nozzles
- Rechargeable

### TECH SPECS

- 18 volts power supply
- 600 W output
- 570 or 930° F, 2 temperature options



Steinel America, Inc.  
9051 Lyndale Ave. South  
Bloomington, MN 55420

Support: (800) 852-4343  
Email: sales@steinel.net

[www.steinel.net](http://www.steinel.net)



 steinel

v. 09.24